

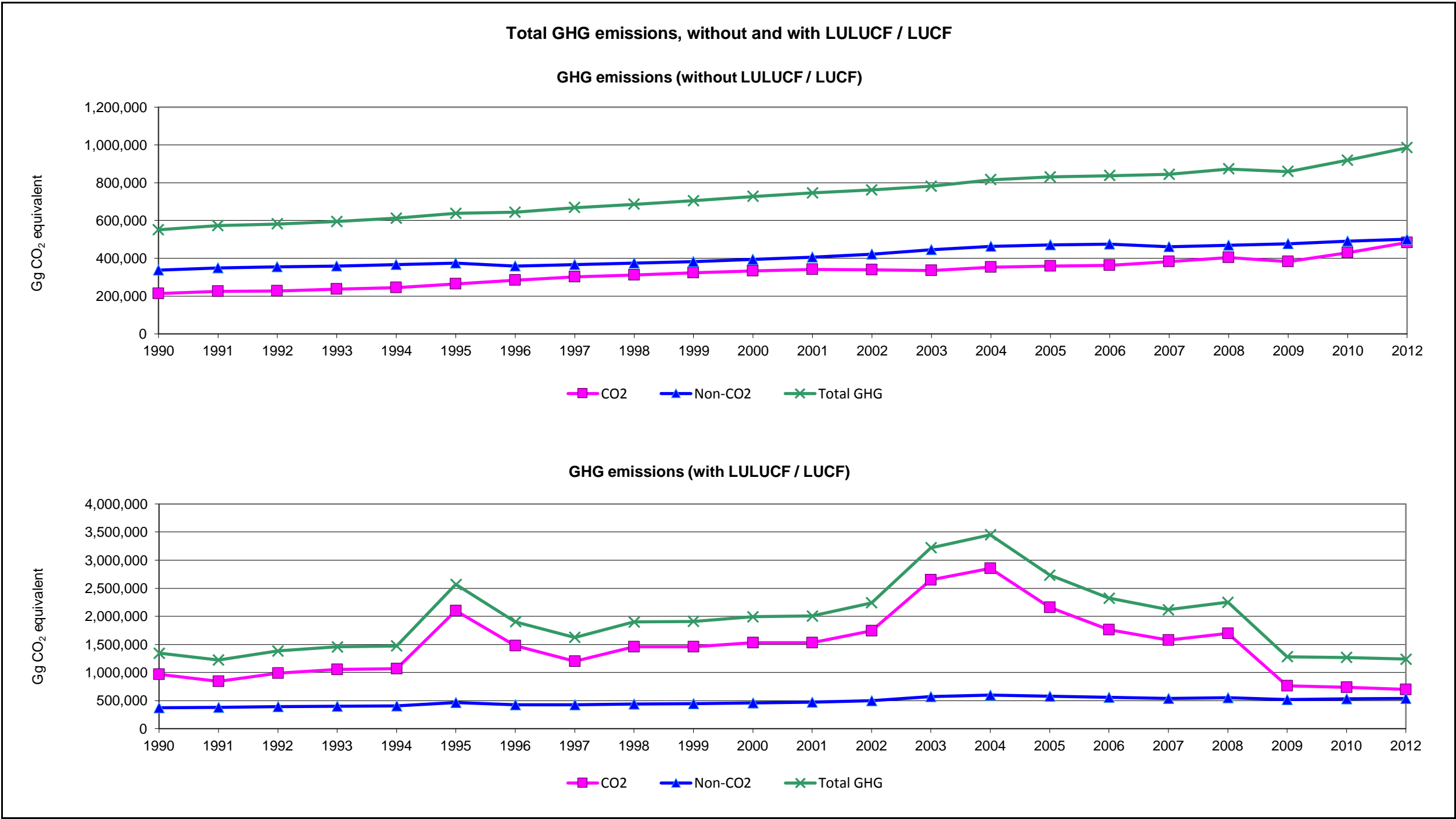


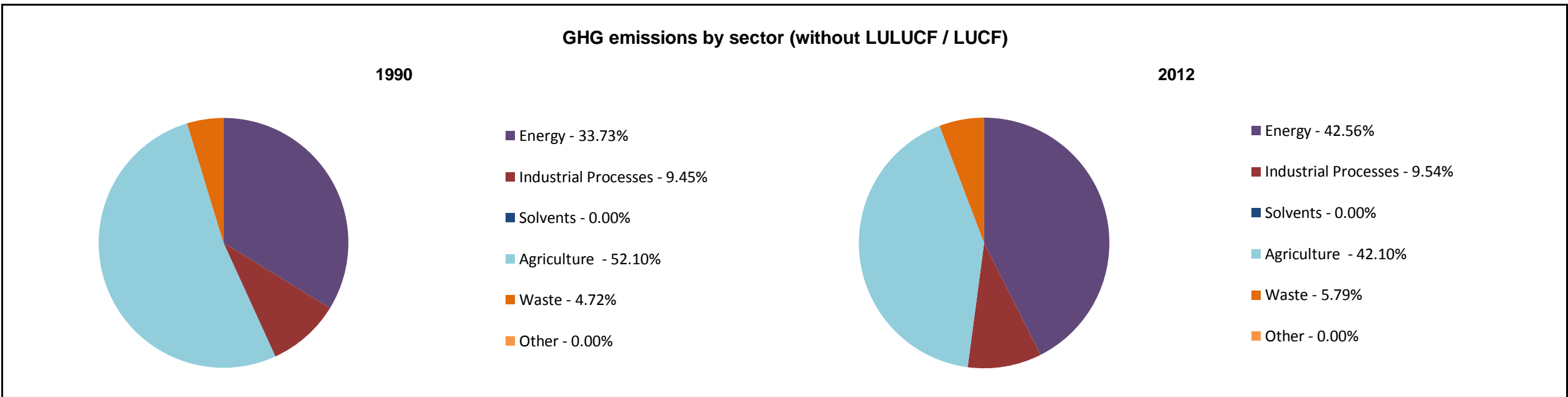
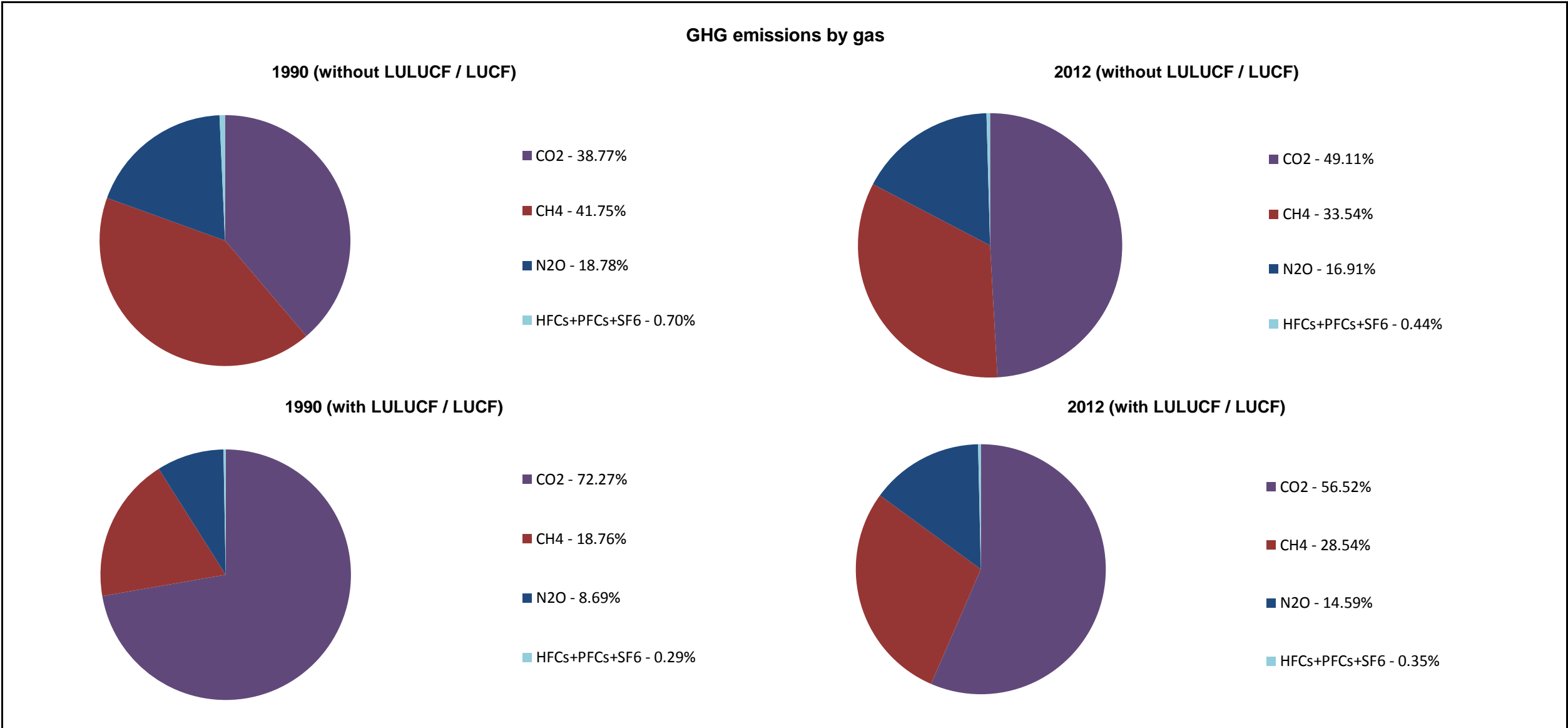
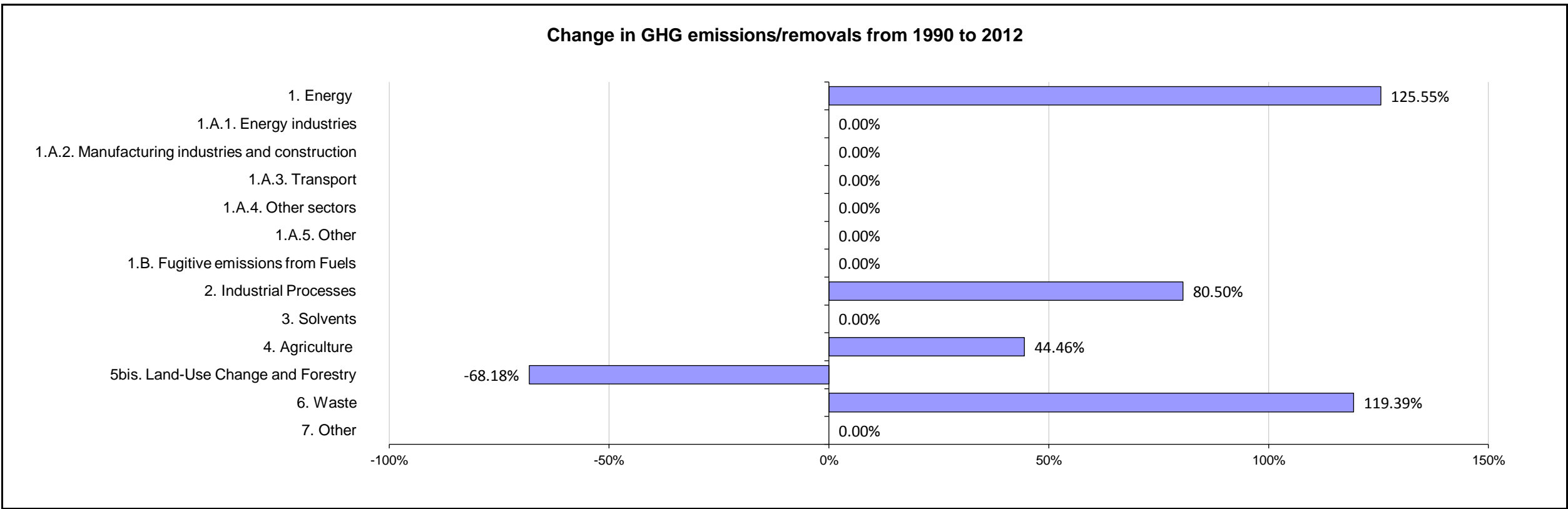
Emissions Summary for Brazil

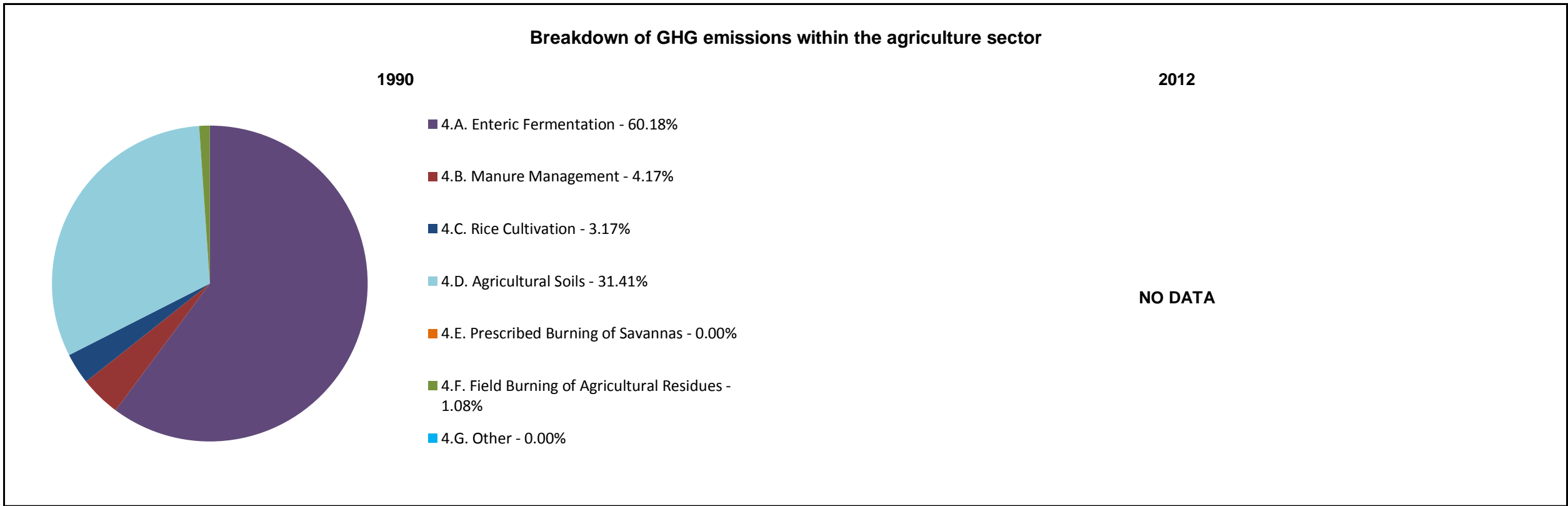
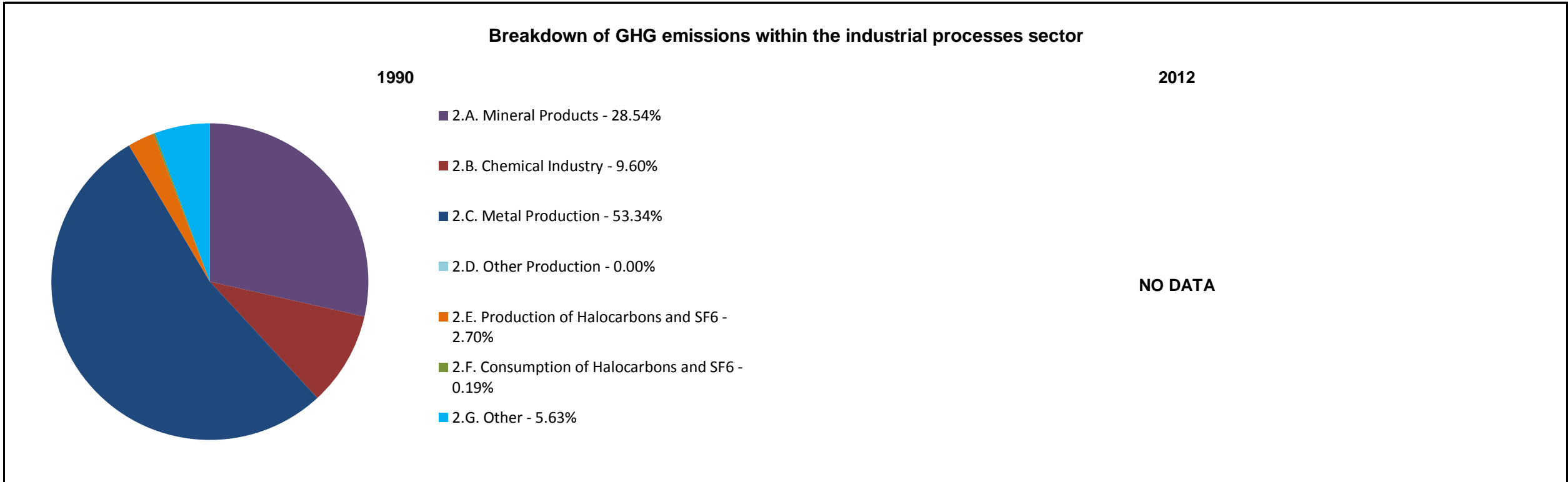
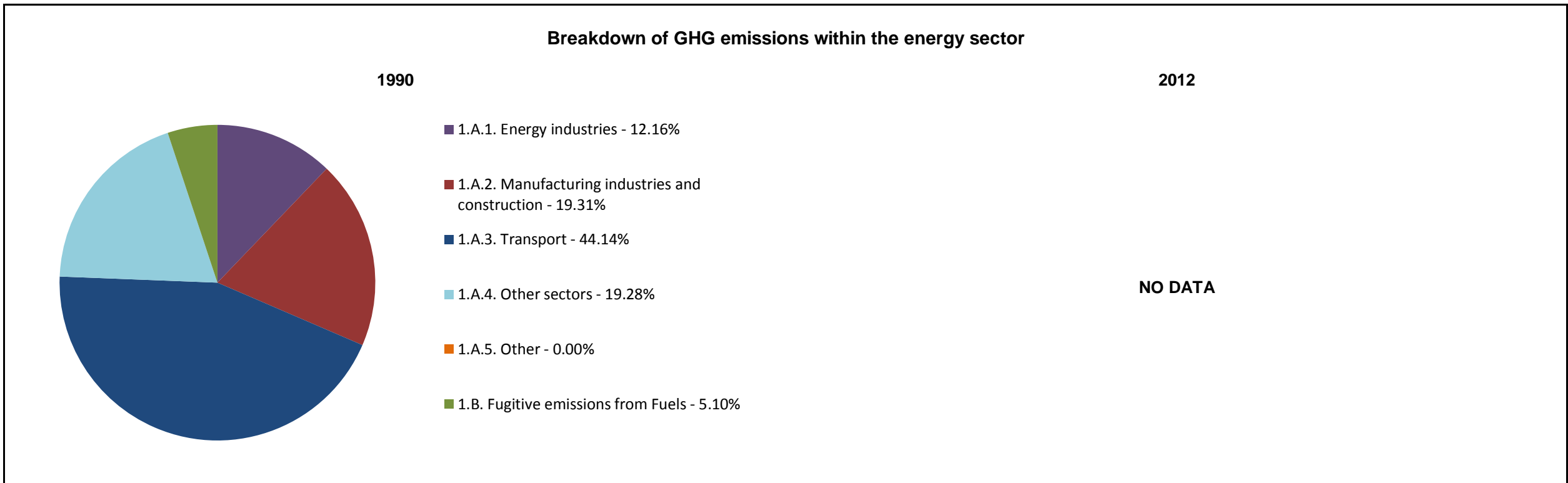
	Emissions, in Gg CO <sub>2</sub> equivalent		
	1990	2001	2012
CO <sub>2</sub> emissions without LULUCF / LUCF	213,555.0	340,411.0	483,623.0
CO <sub>2</sub> net emissions/removals by LULUCF / LUCF	756,970.0	1,192,787.0	215,312.0
CO <sub>2</sub> net emissions/removals with LULUCF / LUCF	970,525.0	1,533,198.0	698,935.0
GHG emissions without LULUCF / LUCF	550,872.0	745,429.7	984,692.2
GHG net emissions/removals by LULUCF / LUCF	792,035.1	1,261,220.3	252,004.0
GHG net emissions/removals with LULUCF / LUCF	1,342,907.1	2,006,650.0	1,236,696.2

	Changes in emissions, in percent		
	From 1990 to 2001	From 2001 to 2012	From 1990 to 2012
CO <sub>2</sub> emissions without LULUCF / LUCF	59.40%	42.07%	126.46%
CO <sub>2</sub> net emissions/removals by LULUCF / LUCF	57.57%	-81.95%	-71.56%
CO <sub>2</sub> net emissions/removals with LULUCF / LUCF	57.98%	-54.41%	-27.98%
GHG emissions without LULUCF / LUCF	35.32%	32.10%	78.75%
GHG net emissions/removals by LULUCF / LUCF	59.24%	-80.02%	-68.18%
GHG net emissions/removals with LULUCF / LUCF	49.43%	-38.37%	-7.91%

	Average annual growth rates, in percent per year		
	From 1990 to 2001	From 2001 to 2012	From 1990 to 2012
CO <sub>2</sub> emissions without LULUCF / LUCF	4.33%	3.24%	3.79%
CO <sub>2</sub> net emissions/removals by LULUCF / LUCF	4.22%	-14.41%	-5.55%
CO <sub>2</sub> net emissions/removals with LULUCF / LUCF	4.24%	-6.89%	-1.48%
GHG emissions without LULUCF / LUCF	2.79%	2.56%	2.68%
GHG net emissions/removals by LULUCF / LUCF	4.32%	-13.62%	-5.07%
GHG net emissions/removals with LULUCF / LUCF	3.72%	-4.30%	-0.37%







Breakdown of GHG emissions/removals within the LULUCF / LUCF sector (Gg CO<sub>2</sub> equivalent)

1990

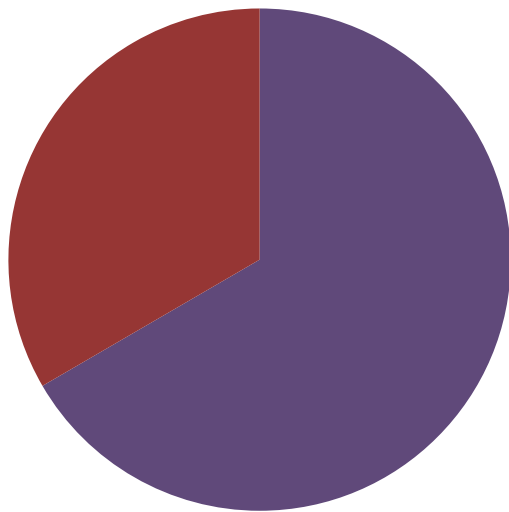
NO DATA

2012

NO DATA

Breakdown of GHG emissions within the waste sector

1990



- 6.A. Solid Waste Disposal on Land - 66.57%
- 6.B. Wastewater Handling - 33.36%
- 6.C. Waste Incineration - 0.00%
- 6.D. Other - 0.00%

2012

NO DATA