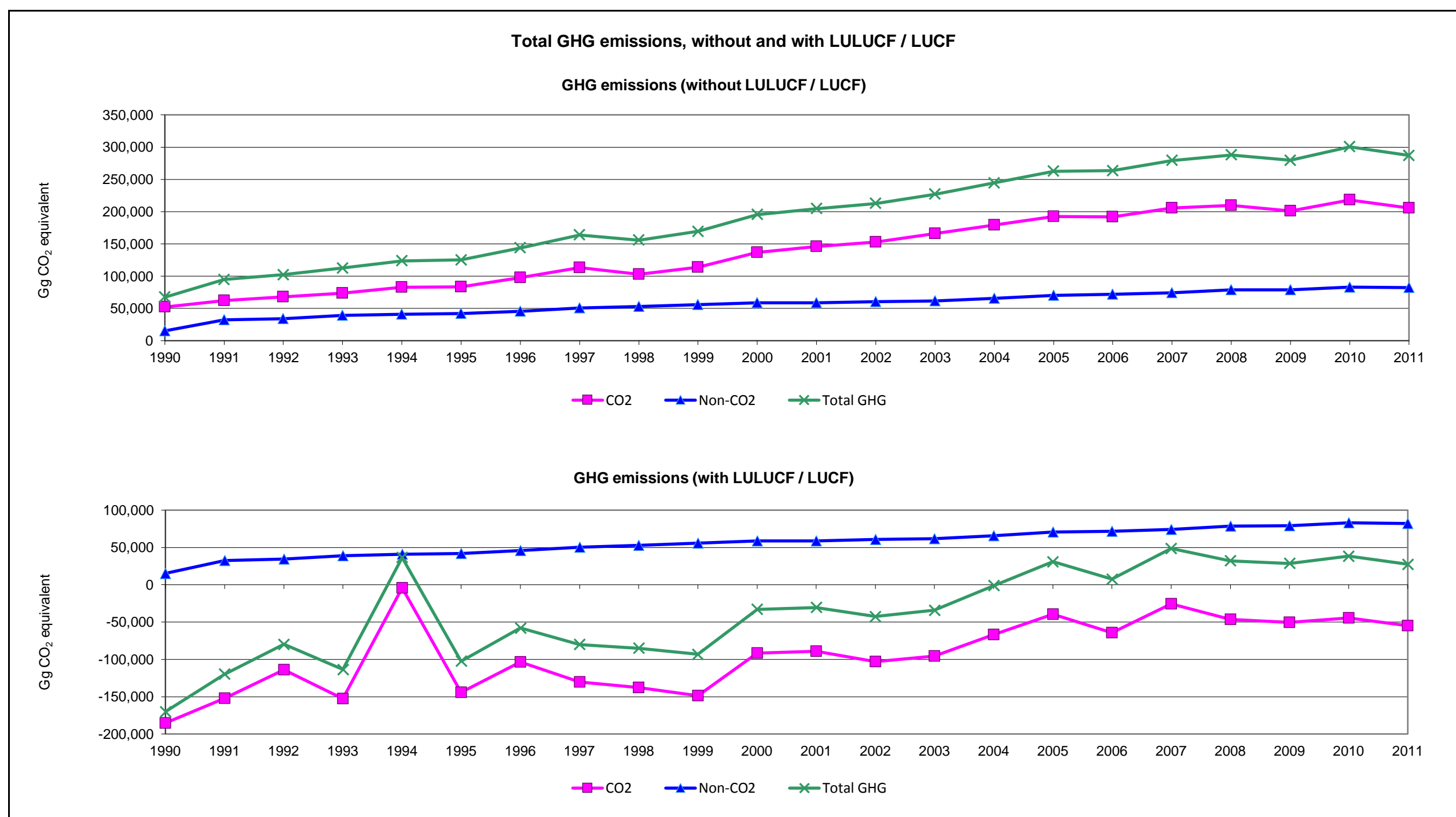


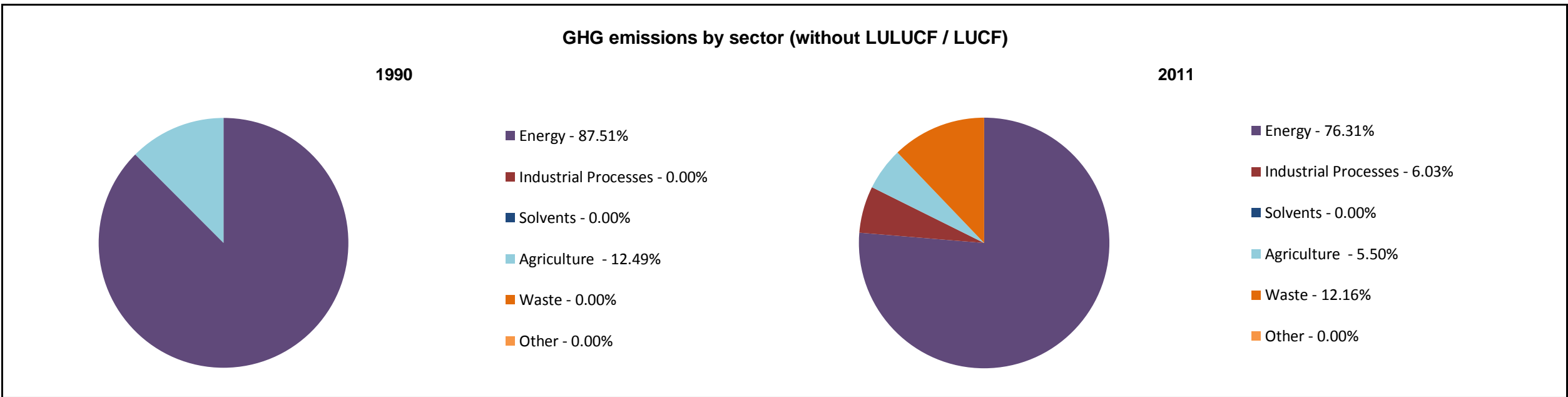
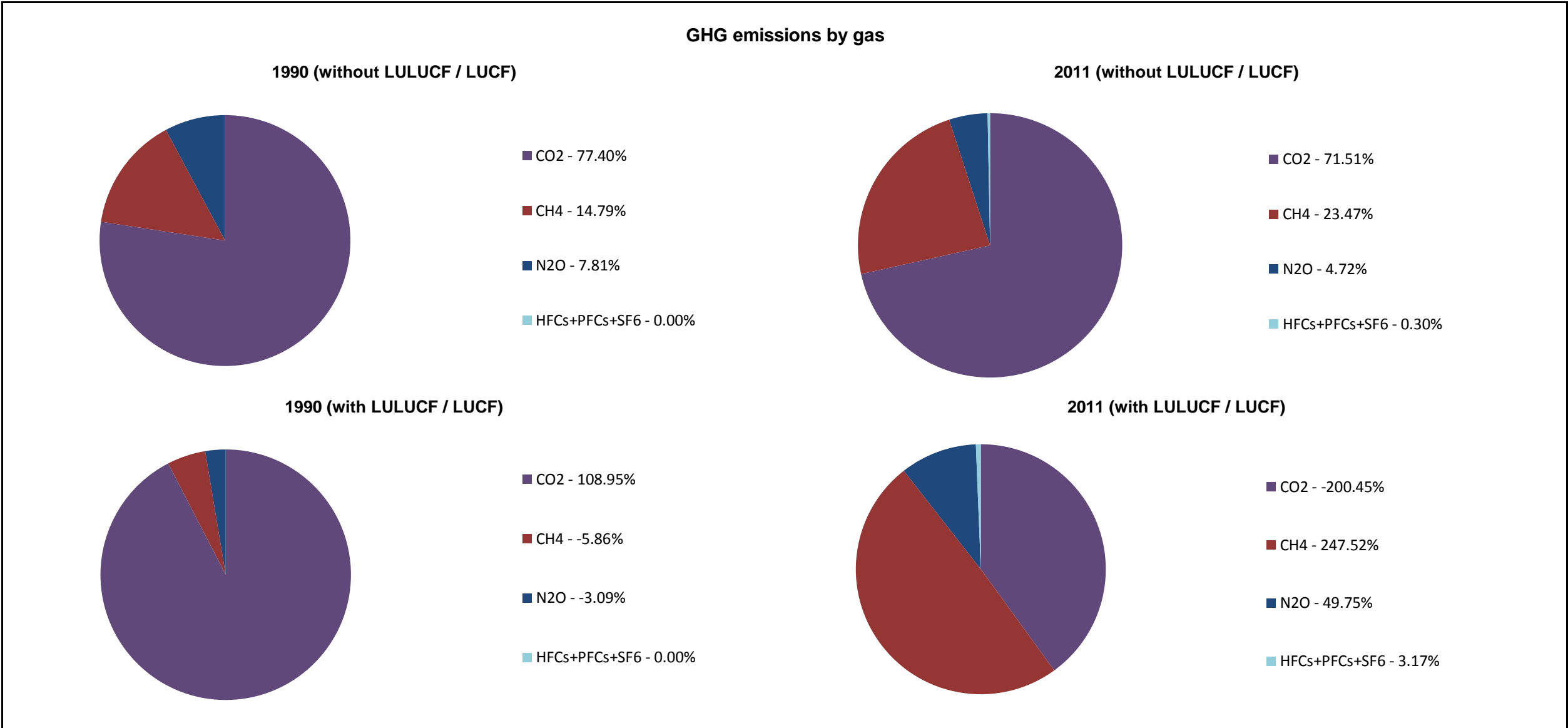
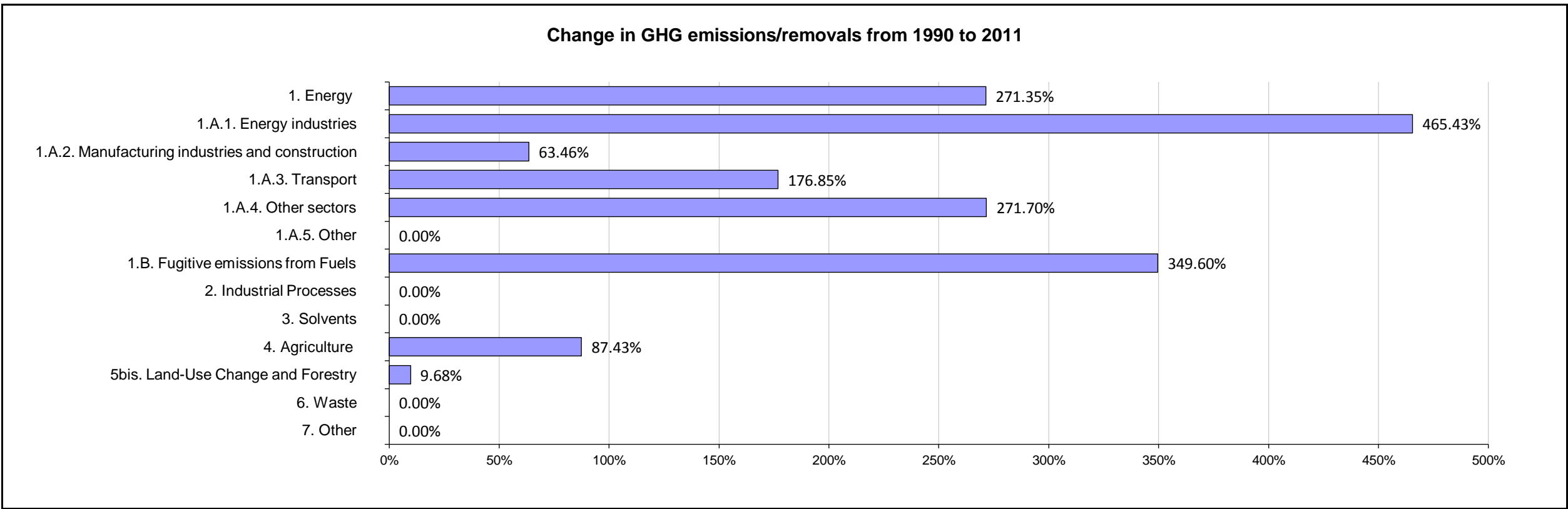
Emissions Summary for Malaysia

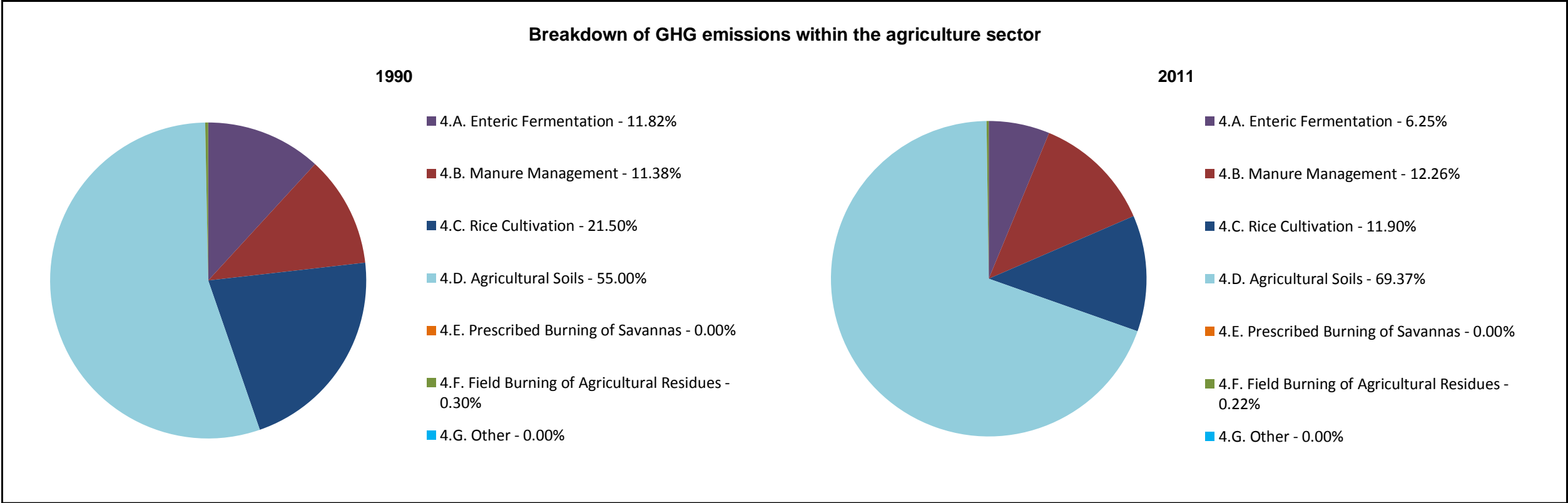
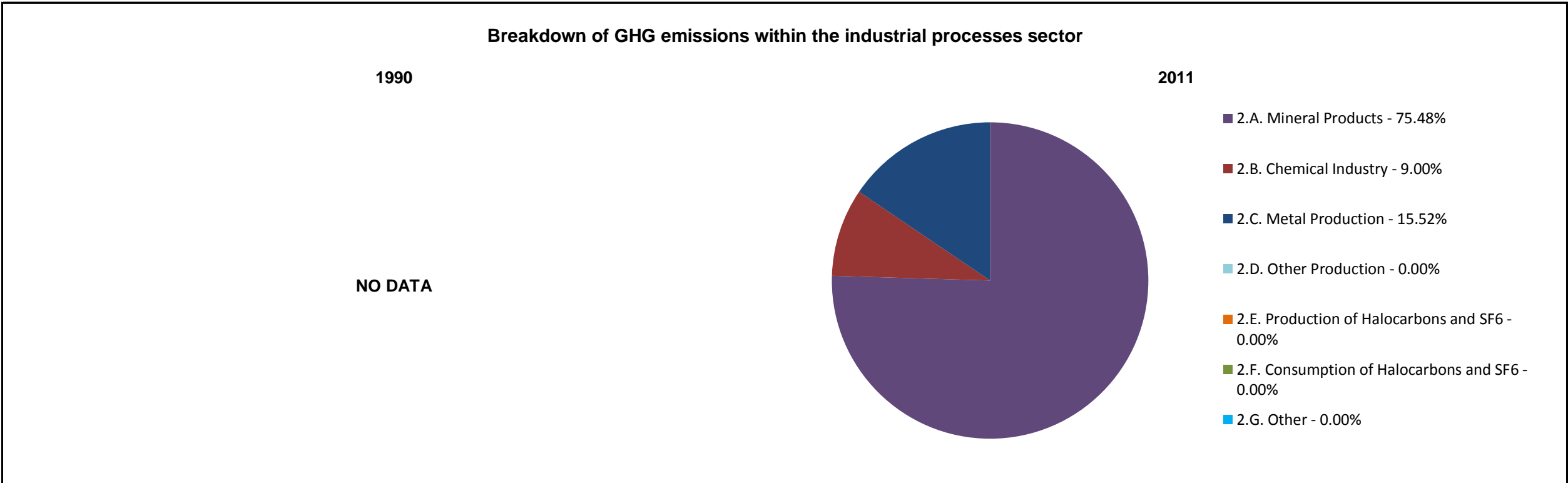
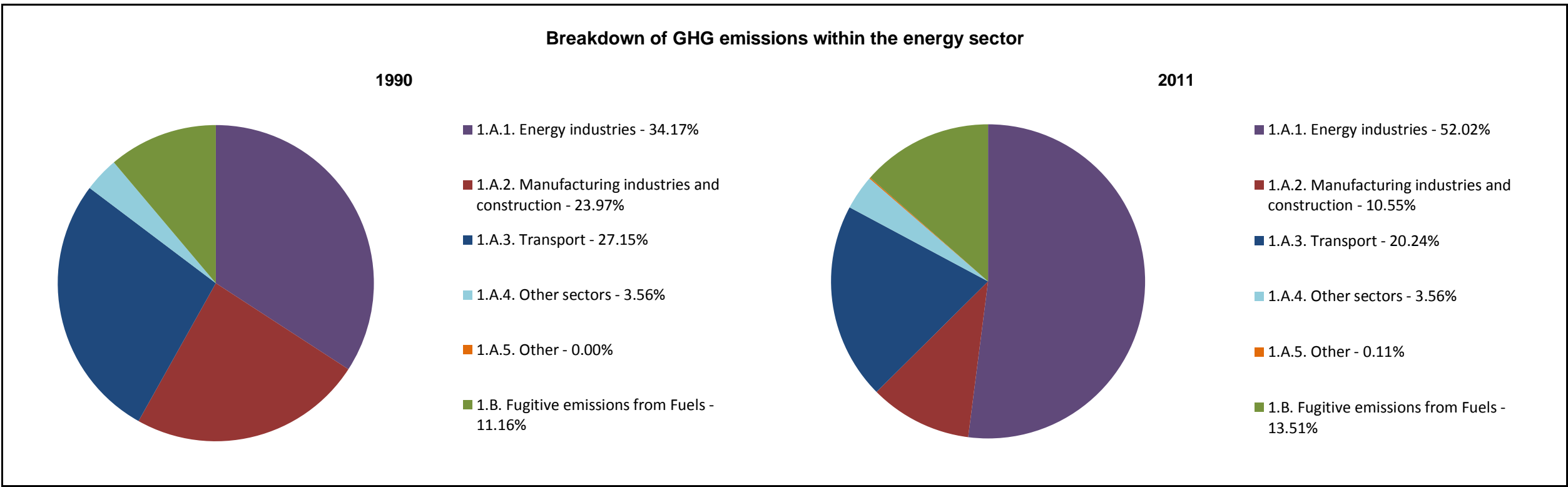
	Emissions, in Gg CO ₂ equivalent		
	1990	2001	2011
CO ₂ emissions without LULUCF / LUCF	52,140.6	146,115.8	205,768.0
CO ₂ net emissions/removals by LULUCF / LUCF	-237,471.3	-235,339.3	-260,456.7
CO ₂ net emissions/removals with LULUCF / LUCF	-185,330.7	-89,223.5	-54,688.7
GHG emissions without LULUCF / LUCF	67,367.9	204,645.9	286,874.4
GHG net emissions/removals by LULUCF / LUCF	-237,471.3	-235,339.3	-260,456.7
GHG net emissions/removals with LULUCF / LUCF	-170,103.5	-30,353.0	27,283.6

	Changes in emissions, in percent		
	From 1990 to 2001	From 2001 to 2011	From 1990 to 2011
CO ₂ emissions without LULUCF / LUCF	180.23%	40.83%	294.64%
CO ₂ net emissions/removals by LULUCF / LUCF	-0.90%	10.67%	9.68%
CO ₂ net emissions/removals with LULUCF / LUCF	-51.86%	-38.71%	-70.49%
GHG emissions without LULUCF / LUCF	203.77%	40.18%	325.83%
GHG net emissions/removals by LULUCF / LUCF	-0.90%	10.67%	9.68%
GHG net emissions/removals with LULUCF / LUCF	-82.16%	-189.89%	-116.04%

	Average annual growth rates, in percent per year		
	From 1990 to 2001	From 2001 to 2011	From 1990 to 2011
CO ₂ emissions without LULUCF / LUCF	9.82%	3.48%	6.76%
CO ₂ net emissions/removals by LULUCF / LUCF	-0.08%	1.02%	0.44%
CO ₂ net emissions/removals with LULUCF / LUCF	-6.43%	-4.78%	-5.65%
GHG emissions without LULUCF / LUCF	10.63%	3.44%	7.14%
GHG net emissions/removals by LULUCF / LUCF	-0.08%	1.02%	0.44%
GHG net emissions/removals with LULUCF / LUCF	-14.50%	-	-







Breakdown of GHG emissions/removals within the LULUCF / LUCF sector (Gg CO₂ equivalent)

1990

NO DATA

2011

NO DATA

Breakdown of GHG emissions within the waste sector

1990

NO DATA

2011

