



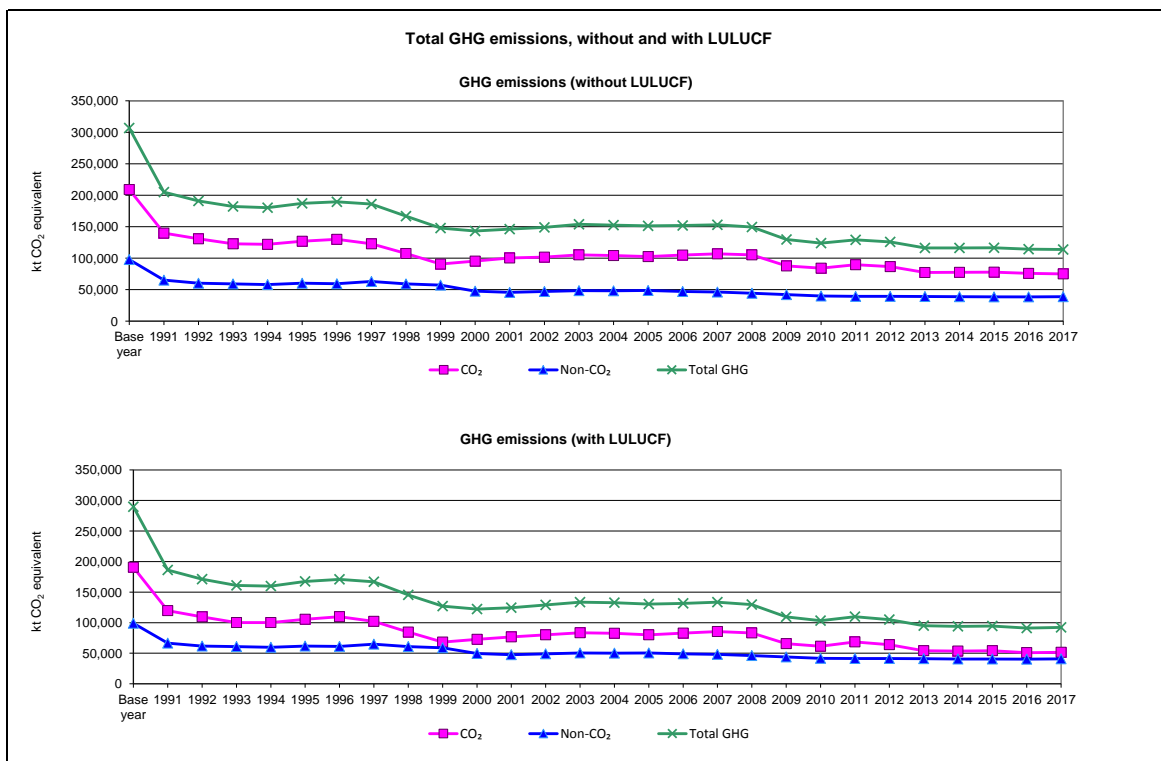
Summary of GHG Emissions for Romania Base year (Convention) = 1989

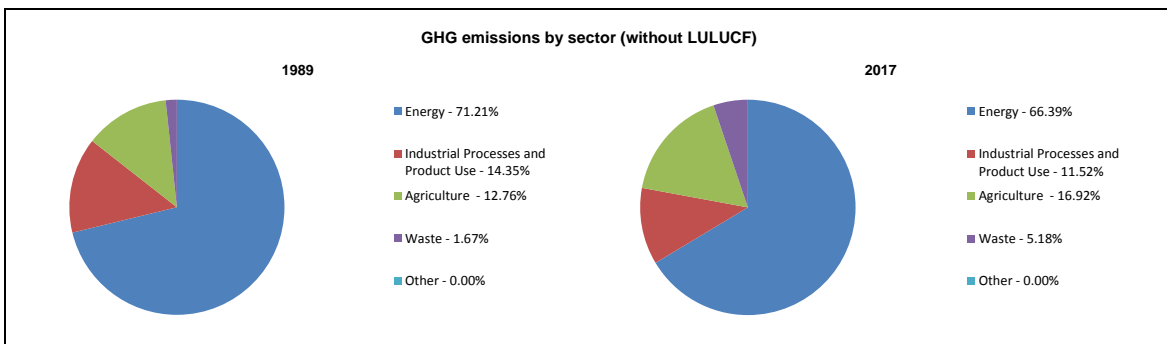
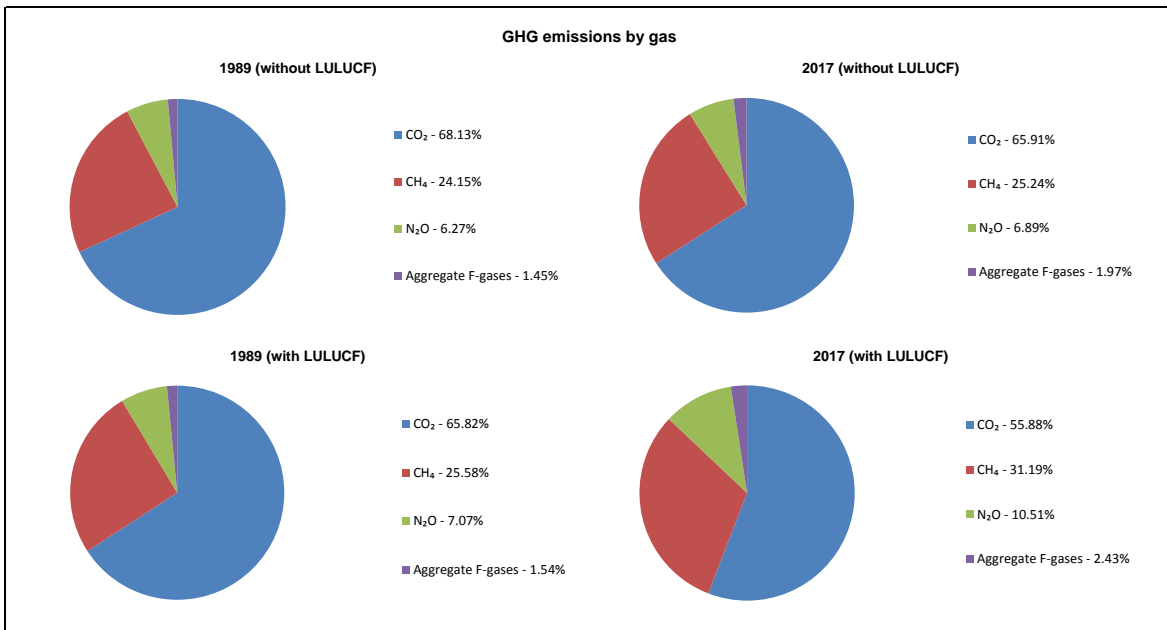
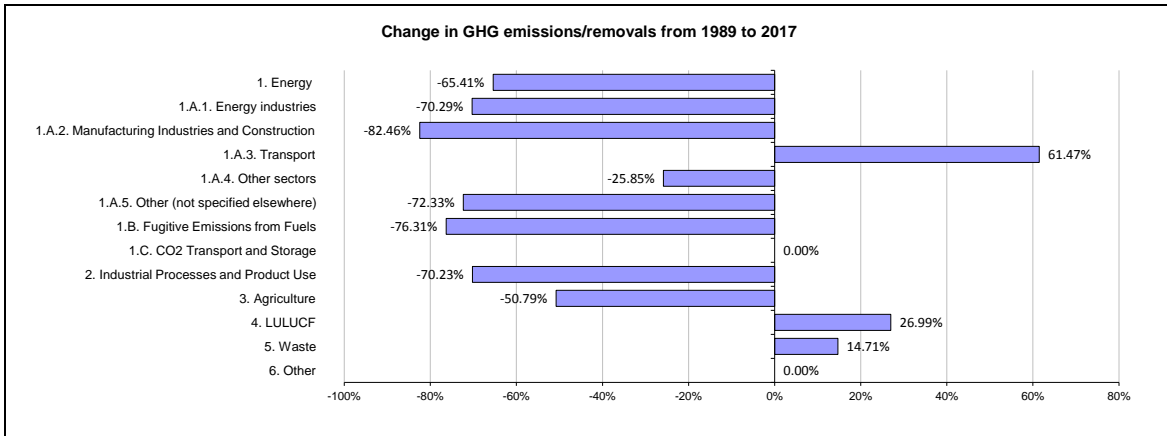
	Emissions, in kt CO ₂ equivalent		
	Base year	2000	Last Inventory Year (2017)
CO ₂ emissions without LULUCF	208,946.4	95,428.3	74,998.3
CO ₂ net emissions/removals by LULUCF	-18,313.8	-22,638.2	-23,525.3
CO ₂ net emissions/removals with LULUCF	190,632.6	72,790.1	51,472.9
GHG emissions without LULUCF	306,690.3	143,126.5	113,795.9
GHG net emissions/removals by LULUCF	-17,072.9	-20,912.0	-21,680.0
GHG net emissions/removals with LULUCF	289,617.4	122,214.5	92,115.9
Indirect CO ₂	NE,NO	NE,NO	NO,NE

	Changes in emissions, in percent		
	From Base year to 2000	From 2000 to Last Inventory Year (2017)	From Base year to Last Inventory Year (2017)
CO ₂ emissions without LULUCF	-54.33%	-21.41%	-64.11%
CO ₂ net emissions/removals by LULUCF	23.61%	3.92%	28.46%
CO ₂ net emissions/removals with LULUCF	-61.82%	-29.29%	-73.00%
GHG emissions without LULUCF	-53.33%	-20.49%	-62.90%
GHG net emissions/removals by LULUCF	22.49%	3.67%	26.99%
GHG net emissions/removals with LULUCF	-57.80%	-24.63%	-68.19%

	Average annual growth rates, in percent per year		
	From Base year to 2000	From 2000 to Last Inventory Year (2017)	From Base year to Last Inventory Year (2017)
CO ₂ emissions without LULUCF	-6.88%	-1.41%	-3.59%
CO ₂ net emissions/removals by LULUCF	1.95%	0.23%	0.90%
CO ₂ net emissions/removals with LULUCF	-8.38%	-2.02%	-4.57%
GHG emissions without LULUCF	-6.69%	-1.34%	-3.48%
GHG net emissions/removals by LULUCF	1.86%	0.21%	0.86%
GHG net emissions/removals with LULUCF	-7.54%	-1.65%	-4.01%

The base year under the Climate Change Convention is 1990 except for Bulgaria (1988), Hungary (average of 1985 to 1987), Poland (1988), Romania (1989) and Slovenia (1986), as defined by decisions 9/CP.2 and 11/CP.4.

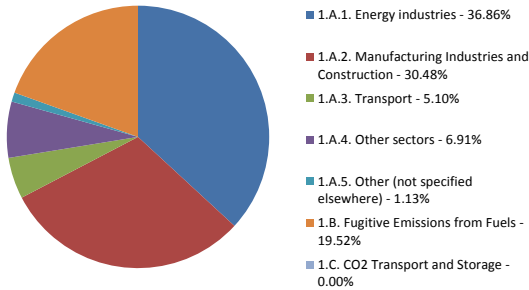




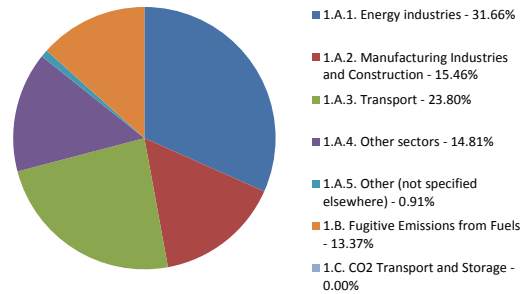


Breakdown of GHG emissions within the energy sector

1989

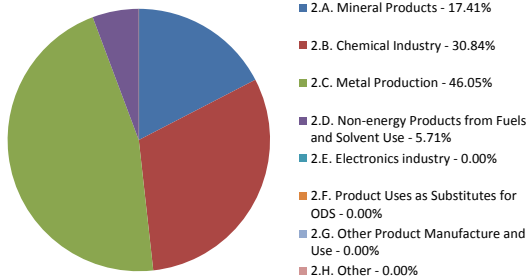


2017

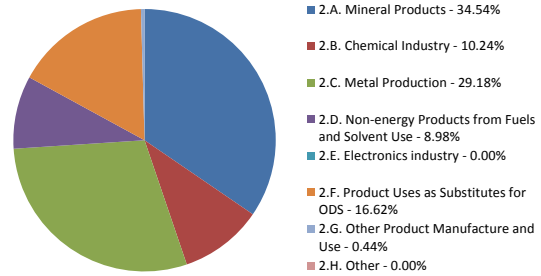


Breakdown of GHG emissions within the industrial processes and product use sector

1989

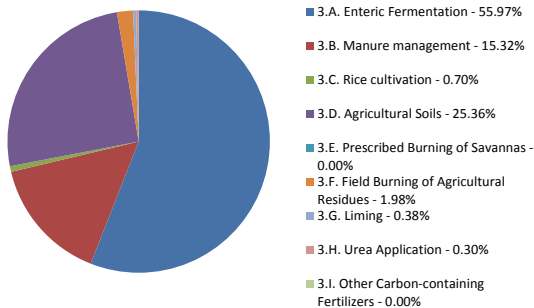


2017



Breakdown of GHG emissions within the agriculture sector

1989



2017

